

TECHNICAL SPECIFICATION SHEET FOR

Blue Seal Electric Combi Steamer S LINE COMPACT EC623CSDW 6 x 2/3GN



- Compact 510mm wide
- Manual controls
- High visibility alphanumeric display
- Multipoint core temperature probe
- Ecospeed – less energy consumption by regulating temperature fluctuation
- Ecovapor system - automatic steam saturation control
- Two speed fan
- Over 90 preset recipe programs
- Programmable with 99 programs with automatic 4 cycle sequence
- CLIMA control 30° to 300°C
- Auto-reversing fan rotation
- Autoclima with automatic vent
- CLIMA system to control the percentage of humidity during cooking
- Hand shower
- Semi automatic washing programme
- Fully automatic wash system
- 4 LED's to indicate actual cooking cycle in programme mode
- USB connection for program updating and HACCP data download
- Rack runners for GN loading

GENERAL FEATURES:

- Direct steam injection system
- Stainless steel construction
- Hygienic rounded corners in oven cavity
- Pivoting fan suction panel
- Top removable control panel for easy servicing
- Hygienic plug-in door seal for easy to remove day-to-day cleaning
- Adjustable door hinges
- Self draining door condensate drip tray
- Oven door handle mechanism allows either left or right operation
- Cool to touch double glazed door
- Hinged inner glass for easy cleaning
- Constant self-diagnosis for error recognition

OPTIONAL FEATURES:

- Right hinged door
- Marine and special voltages
- Side runners for 352 x 325 trays (6 trays)

TECHNICAL SPECIFICATION SHEET FOR Blue Seal Electric Combi Steamer S LINE COMPACT EC623CSDW 6 x 2/3GN

Dimensions

Width	510mm
Height	730mm
Depth	625mm
Weight	57kg

Packed Dimensions

Width	570mm
Height	890mm
Depth	760mm
Weight	68kg

Shelves

2/3 GN	6
Shelf Spacings	60mm

Installation requirements

(for precise installation instructions, please refer to the unit's installation manual).

Power connection requirements

Multi pole circuit breaker and all pole disconnection isolator switch installed near the appliance.

Supply line voltage;
400-415V ~ 50Hz, 3P+N+E

Special voltage options available on request.

Power Connection

Total (kW)	5.25
Convection power (kW)	5
Rated Current (A) (400V)	8

IPX5 spray-proof and hose proof.

Installation clearances

- rear	50mm
- right	500mm
- left	100mm

*Clearance required on fixed installations for service accessibility.

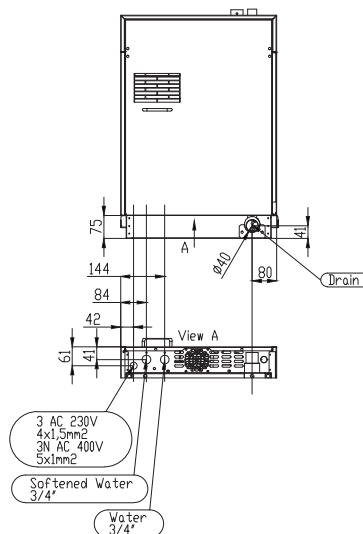
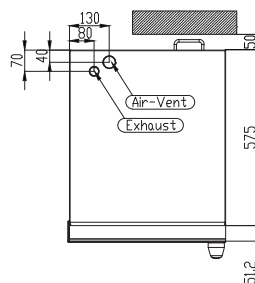
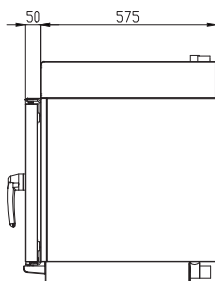
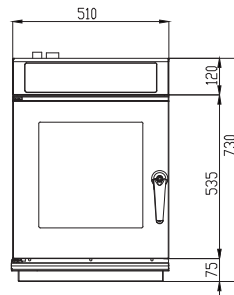
If heat sources are located near the RH side of the combi, ensure that a minimum distance of 500mm is maintained.

Install in accordance with local body regulations only on horizontal surfaces and not against combustible walls.

Water connection requirements

- cold water
- flow pressure (200-500kPa)
- soft water connection*
- shut-off valve with return flow inhibitor and dirt filter
- water supply 2 x R3/4
- R40 waste water connection

(*Water softener may be required. Please refer to installation manual for water treatment values.)



MOFFAT®

Australia
www.moffat.com.au

New Zealand
www.moffat.co.nz

Australia
Moffat Pty Limited

Victoria/Tasmania
740 Springvale Road
Mulgrave, Victoria 3170
Ph 03-9518 3888
Fax 03-9518 3833
vsales@moffat.com.au
www.moffat.com.au

New South Wales
Ph 02-8833 4111
nswsales@moffat.com.au

South Australia
Ph 03-9518 3888
vsales@moffat.com.au

Queensland
Ph 07-3630 8600
qldsales@moffat.com.au

Western Australia
Ph 08-9202 6820
bgarcia@moffat.com.au

New Zealand
Moffat Limited

Christchurch
16 Osborne Street
Christchurch 8011
Ph +64 3-389 1007
Fax +64 3-389 1276
sales@moffat.co.nz

Auckland
Ph +64 9-574 3150
sales@moffat.co.nz



In line with policy to continually develop and improve its products, Moffat Limited reserves the right to change specifications and design without notice.